

---

# Reservoir Competence of Vertebrate Hosts for *Anaplasma phagocytophilum*

Felicia Keesing, Michelle H. Hersh, Michael Tibbetts, Diana J. McHenry, Shannon Duerr, Jesse Brunner, Mary Killilea, Kathleen LoGiudice, Kenneth A. Schmidt, and Richard S. Ostfeld

Fourteen vertebrate species (10 mammals and 4 birds) were assessed for their ability to transmit *Anaplasma phagocytophilum*, the bacterium that causes human granulocytic anaplasmosis, to uninfected feeding ixodid ticks. Small mammals were most likely to infect ticks but all species assessed were capable of transmitting the bacterium, in contrast to previous findings.

Human granulocytic anaplasmosis (HGA), formerly known as human granulocytic ehrlichiosis, is an emerging infectious disease in the United States, Europe, and Asia (1,2). In the United States, most reported cases are concentrated in north-central and northeastern states. Patients with HGA typically have nonspecific febrile symptoms, including fever, chills, headache, and myalgia (1). Most patients with HGA respond well to antimicrobial drug treatment, but complications are not uncommon and some cases are fatal (2). Because of difficulties in diagnosis and lack of awareness of HGA by physicians and the public, many cases are misdiagnosed, and national statistics likely dramatically underreport this disease (1).

HGA is caused by a rickettsial bacterium, *Anaplasma phagocytophilum* (1), groups of which form dense aggregations in granulocytes (3). The bacterium is passed from host to host through the bite of an infected ixodid tick: *Ixodes scapularis* in the eastern and central United States and *Ix. pacificus* in the western United States (4–6). Serosurveys and molecular diagnostics within disease-endemic

zones show that many ground-dwelling vertebrate species are exposed to or infected with *A. phagocytophilum* (2). These data indicate that tick-to-host transmission rates are high and that infection is widespread in host communities.

However, few studies have examined rates of transmission from infected hosts to uninfected ticks, a trait known as the reservoir competence of these hosts. Quantification of host species-specific reservoir competence can identify animals most responsible for producing infected ticks and therefore increasing risk for human exposure. Overall, robust quantitative information on reservoir competence is scarce and key hosts remain unstudied. We determined the reservoir competence for *A. phagocytophilum* of 14 species (10 mammals and 4 birds) in a disease-endemic region of the eastern United States.

## The Study

All procedures were conducted after approval from the Cary Institute of Ecosystem Studies Institutional Animal Care and Use Committee. We conducted our research in Dutchess County, New York, a region where human cases of anaplasmosis are rapidly increasing. We trapped hosts on the property of the Cary Institute of Ecosystem Studies (Millbrook, NY, USA) during the peak abundance of larval blacklegged ticks (*Ix. scapularis*) during July–September in 2008, 2009, and 2010. Detailed methods have been reported (7).

We held members of 10 mammal and 4 bird species (Table 1) for 3 days in cages with wire mesh floors suspended over pans lined with wet paper towels. Ticks feeding on hosts were allowed to feed to repletion and drop from hosts into the pans, from which they were collected. In some cases, if hosts did not drop >10 ticks within 3 days, we infested them with unfed larval ticks following methods described (8). Because no evidence has been found for transovarial transmission of *A. phagocytophilum* (9) or of infection in larval ticks, these infestations likely did not affect host exposure to the pathogen. Hosts that had been infested were held for an additional 4 days, and engorged ticks were collected each day. All engorged larval ticks were held in moistened glass vials at constant temperature and humidity until they molted into the nymphal stage. Newly molted nymphs were flash-frozen in liquid nitrogen and stored at –80°C.

DNA extraction was conducted as described (7). To amplify extracted DNA, we used protocols reported by Courtney et al. (10). Briefly, we used primers ApMSP2f and ApMSP2r and probe ApMSP2p, which are specific for the *msp2* gene of *A. phagocytophilum* and generate a 77-bp fragment. Real-time PCR was performed by using a CFX96 Real-Time PCR System (Bio-Rad, Hercules, CA, USA). We used extracted DNA from unfed larval ticks and ultrapure water as negative controls to account for potential

---

Bard College, Annandale-on-Hudson, New York, USA (F. Keesing, M.H. Hersh, M. Tibbetts, D.J. McHenry); Cary Institute of Ecosystem Studies, Millbrook, NY, USA (F. Keesing, M.H. Hersh, S. Duerr, R.S. Ostfeld); Washington State University, Pullman, Washington, USA (J. Brunner); New York University, New York, New York, USA (M. Killilea); Union College, Schenectady, NY, USA (K. LoGiudice); and Texas Tech University, Lubbock, TX, USA (K.A. Schmidt)

DOI: <http://dx.doi.org/10.3201/eid1812.120919>

Table 1. Host species tested for *Anaplasma phagocytophilum* reservoir competence, southeastern New York, USA, 2008–2010\*

Host species	Common name	No. hosts tested	No. ticks tested	Mean no. ticks sampled per host (range)
<b>Mammals</b>				
<i>Blarina brevicauda</i>	Northern short-tailed shrew	28	529	18.9 (11–25)
<i>Didelphis virginiana</i>	Virginia opossum	25	501	20.0 (11–25)
<i>Glaucomys volans</i>	Southern flying squirrel	4	59	14.8 (6–25)
<i>Mephitis mephitis</i>	Striped skunk	1	21	21.0 (21–21)
<i>Peromyscus leucopus</i>	White-footed mouse	30	571	19.0 (10–25)
<i>Procyon lotor</i>	Raccoon	25	484	19.4 (10–25)
<i>Sciurus carolinensis</i>	Eastern gray squirrel	20	358	17.9 (10–25)
<i>Sorex cinereus</i>	Masked shrew	6	41	6.8 (4–10)
<i>Tamias striatus</i>	Eastern chipmunk	19	300	15.8 (9–25)
<i>Tamiasciurus hudsonicus</i>	Eastern red squirrel	15	297	19.8 (11–25)
<b>Birds</b>				
<i>Catharus fuscescens</i>	Veery	21	427	20.3 (10–25)
<i>Dumetella carolinensis</i>	Gray catbird	14	235	16.8 (9–24)
<i>Hylocichla mustelina</i>	Wood thrush	28	496	17.7 (10–24)
<i>Turdus migratorius</i>	American robin	18	321	17.8 (8–24)

\*Number of ticks tested per host can include samples from either natural body loads or experimental infestations, as described in the text, and is not representative of mean total body loads.

contamination during the extraction and PCR processes, respectively. The cloned 77-bp fragment was used as a positive control. Barrier pipette tips were used throughout the process to prevent contamination. We conducted 3 replicate PCRs per tick.

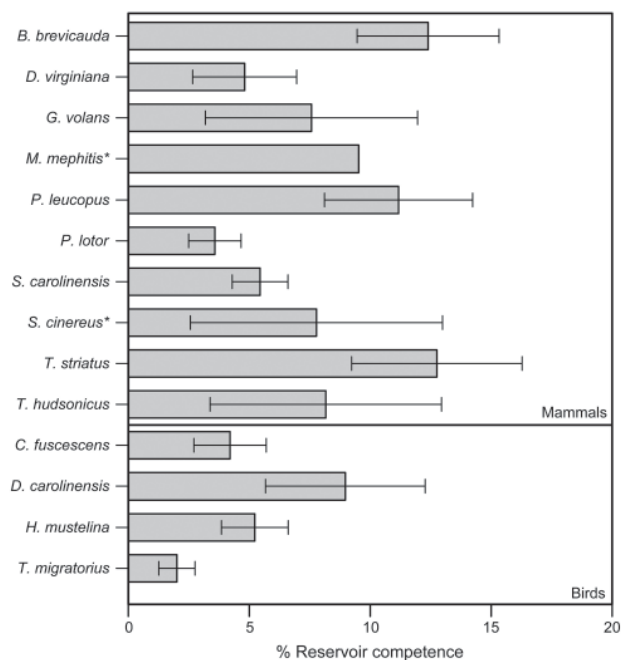


Figure 1. Mean reservoir competence of 14 host species (10 mammals and 4 birds) for *Anaplasma phagocytophilum*, southeastern New York, USA, 2008–2010. Error bars indicate SE. Reservoir competence is defined as the mean percentage of ticks infected by any individual host of a given species. Host species with <10 individual hosts sampled are indicated by an asterisk. See Table 1 for sample sizes. Single-letter abbreviations for genera along the left indicate *Blarina*, *Didelphis*, *Glaucomys*, *Mephitis*, *Peromyscus*, *Procyon*, *Sciurus*, *Sorex*, *Tamias*, *Tamiasciurus*, *Catharus*, *Dumetella*, *Hylocichla*, and *Turdus*, respectively.

Ticks were considered positive for *A. phagocytophilum* if any 1 of 3 replicate samples showed amplified DNA for *A. phagocytophilum* relative to negative controls. Ticks with marginal results (i.e., moderate fluorescence) were tested a second time with the same primers and SYBR green dye. For these confirmatory tests, we included a melt curve analysis in which we determined the temperature at which half of the PCR products had denatured. PCR products were heated from 70°C through 85°C, raising the temperature by 0.5°C every 10 s. Positive controls consistently had melting point maxima of 80.5°C. Using a TOPO-TA Cloning Kit (Invitrogen, Carlsbad, CA, USA), we cloned and sequenced 140 fragments that had a melting point of 80.5°C. Identity of sequences was confirmed by conducting BLAST searches (National Center for Biotechnology Information, Bethesda, MD, USA) of GenBank using the blastn algorithm (11). One hundred thirty-one of 140 fragments were identified as *A. phagocytophilum*; the remaining 9 fragments either had poor-quality sequences or did not have the cloning vector inserted. If any replicate was positive in the confirmatory test, ticks were considered positive for *A. phagocytophilum*. If all 3 replicates in the confirmatory test showed marginal or negative results, the ticks were considered negative. Reservoir competence for each host species was calculated as the average percentage of ticks infected per individual host.

Using data for 4,640 ticks collected from 254 animals over 3 years, we assessed levels of reservoir competence for 14 host species (10 mammals and 4 birds) (Table 1). Short-tailed shrews, white-footed mice, and eastern chipmunks had mean levels of reservoir competence >10% (Figure 1). All other hosts, including opossums, gray and red squirrels, and all 4 species of birds, had mean levels of reservoir competence ranging from 2% to 10%. Reservoir competence differed significantly among these 11 species ( $F = 2.294$ ,  $df = 10,232$ ,  $p = 0.014$ , by 2-way analysis of

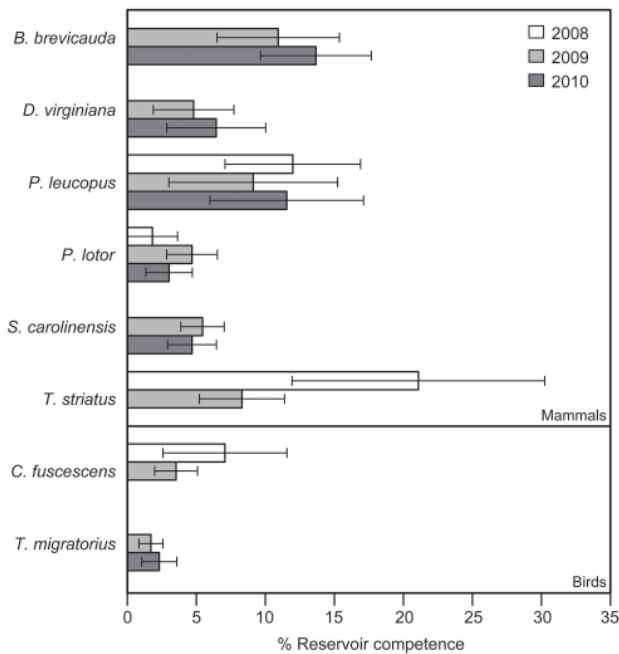


Figure 2. Mean reservoir competence of 14 host species (10 mammals and 4 birds) for *Anaplasma phagocytophilum*, southeastern New York, USA, 2008–2010. Error bars indicate SE. Reservoir competence is defined as the mean percentage of ticks infected by any individual host of a given species. For inclusion, sample sizes for a species had to be  $\geq 4$  in  $\geq 2$  years. No species showed significant variation in reservoir competence across years ( $p > 0.10$ , by 2-way analysis of variance or Kruskal-Wallis test as appropriate, for all species tested). Single-letter abbreviations for genera along the left indicate *Blarina*, *Didelphis*, *Peromyscus*, *Procyon*, *Sciurus*, *Tamias*, *Catharus*, and *Turdus*, respectively.

variance). Southern flying squirrels, striped skunks, and masked shrews all transmitted *A. phagocytophilum* to ticks, but our sample sizes were too small to draw strong conclusions about reservoir competence. For species that we col-

lected in abundant numbers in multiple years ( $\geq 4$  animals in  $\geq 2$  years), reservoir competence of each species did not vary significantly from year to year ( $p > 0.10$  for all species tested, by analysis of variance or Kruskal-Wallis tests as appropriate) (Figure 2).

## Conclusions

Our data contradict several assumptions about the role of hosts in infecting ticks with *A. phagocytophilum*. First, the role of the white-footed mouse in infecting ticks has been controversial (2). Our data suggest that although the mouse is a major reservoir, short-tailed shrews and eastern chipmunks have comparable levels of reservoir competence. In addition, previous work has suggested that chipmunks, skunks, and opossums do not infect feeding ticks (12). At our sites, all of these species infected feeding ticks (Table 2). Thus, the potential for these hosts to contribute to human risk for HGA should not be ignored.

Because hosts are capable of clearing *A. phagocytophilum* infections (13), surveys of host exposure might not represent species-specific probabilities of transmitting the pathogen to uninfected ticks. Instead, the role of particular species in contributing to the pool of infected ticks is best assessed by determining host reservoir competence using field-captured animals that usually carry ticks. On the basis of the community of hosts we sampled, small mammals are most responsible for infecting uninfected larval ticks in nature, and this result is consistent across years.

## Acknowledgments

We thank Mitch Le Sage, Kelly Oggenfuss, Laura Cheney, Micah Strauss, and the 2008–2011 research assistants for laboratory and field assistance.

This study was supported by National Sciences Foundation Emerging Infectious Diseases grant 0813041.

Table 2. Host species infected with *Anaplasma phagocytophilum* southeastern New York, USA, 2008–2010\*

Host species	No. hosts infected/no. tested (%)	No. (%) ticks infected	Mean % infected ticks per infected host (range)
<b>Mammals</b>			
<i>Blarina brevicauda</i>	17/28 (61)	67 (13)	20 (4–56)
<i>Didelphis virginiana</i>	9/25 (36)	20 (4)	13 (4–50)
<i>Glaucomys volans</i> †	2/4 (50)	5 (8)	15 (14–16)
<i>Mephitis mephitis</i> †	1/1 (100)	2 (10)	10
<i>Peromyscus leucopus</i>	15/30 (50)	63 (11)	22 (4–50)
<i>Procyon lotor</i>	10/25 (40)	17 (4)	9 (4–20)
<i>Sciurus carolinensis</i>	14/20 (70)	19 (5)	8 (4–20)
<i>Sorex cinereus</i> †	2/6 (33)	4 (10)	23 (17–30)
<i>Tamias striatus</i>	10/19 (53)	40 (13)	24 (6–46)
<i>Tamiasciurus hudsonicus</i>	7/15 (47)	17 (6)	17 (4–73)
<b>Birds</b>			
<i>Catharus fuscescens</i>	9/21 (43)	19 (4)	10 (4–25)
<i>Dumetella carolinensis</i>	7/14 (50)	20 (9)	18 (4–33)
<i>Hycloichla mustelina</i>	14/28 (50)	27 (5)	10 (4–25)
<i>Turdus migratorius</i>	6/18 (33)	7 (2)	6 (4–11)

\*Infected hosts are those that transmitted *A. phagocytophilum* to  $\geq 1$  *Ixodes scapularis* tick larva.

†Host species with  $< 10$  individual hosts sampled.

Dr Keesing is an educator and scientist in the Program in Biology at Bard College in Annandale, NY, and an adjunct scientist at the Cary Institute of Ecosystem Studies in Millbrook, NY. Her major research interest is the ecology of infectious diseases.

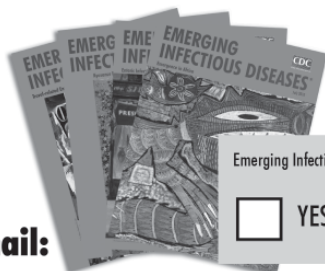
## References

- Demma LJ, Holman RC, McQuiston JH, Krebs JW, Swerdlow DL. Epidemiology of human ehrlichiosis and anaplasmosis in the United States, 2001–2002. *Am J Trop Med Hyg.* 2005;73:400–9.
- Jin H, Feng W, Qian J. Epidemiology and control of human granulocytic anaplasmosis: a systematic review. *Vector Borne Zoonotic Dis.* 2012;12:269–74. <http://dx.doi.org/10.1089/vbz.2011.0753>
- Dumler JS, Choi K, Garcia-Garcia J, Barat N, Scorpio D, Garyu J, et al. Human granulocytic anaplasmosis and *Anaplasma phagocytophilum*. *Emerg Infect Dis.* 2005;11: 1828–34. <http://dx.doi.org/10.3201/eid1112.050898>
- Foley JE, Foley P, Brown RN, Lane RS, Dumler JS, Madigan JE. Ecology of granulocytic ehrlichiosis and Lyme disease in the western United States. *J Vector Ecol.* 2004;29:41–50.
- Hodzic E, Fish D, Maretzki CM, De Silva AM, Feng S, Barthold SW. Acquisition and transmission of the agent of human granulocytic ehrlichiosis by *Ixodes scapularis* ticks. *J Clin Microbiol.* 1998;36:3574–8.
- Kramer VL, Randolph MP, Hui LT, Irwin WE, Gutierrez AG, Vugia DJ. Detection of the agents of human ehrlichioses in ixodid ticks from California. *Am J Trop Med Hyg.* 1999;60:62–5.
- Hersh MH, Tibbetts M, Strauss M, Ostfeld RS, Keesing F. Quantifying reservoir competence of wildlife host species for *Babesia microti*. *Emerg Infect Dis.* 2012;18:1951–7.
- Keesing F, Brunner J, Duerr S, Killilea M, LoGiudice K, Schmidt K, et al. Hosts as ecological traps for the vector of Lyme disease. *Proc Biol Sci.* 2009;276:3911–9. <http://dx.doi.org/10.1098/rspb.2009.1159>
- Dunning Hotopp JC, Lin M, Madupu R, Crabtree J, Angiuoli SV, Eisen J, et al. Comparative genomics of emerging human ehrlichiosis agents. *PLoS Genet.* 2006;2:e21. <http://dx.doi.org/10.1371/journal.pgen.0020021>
- Courtney JW, Kostelnik LM, Zeidner NS, Massung RF. Multiplex real-time PCR for detection of *Anaplasma phagocytophilum* and *Borrelia burgdorferi*. *J Clin Microbiol.* 2004;42:3164–8. <http://dx.doi.org/10.1128/JCM.42.7.3164-3168.2004>
- Altschul SF, Gish W, Miller W, Myers EW, Lipman DJ. Basic local alignment search tool. *J Mol Biol.* 1990;215:403–10.
- Levin ML, Nicholson WL, Massung RF, Sumner JW, Fish D. Comparison of the reservoir competence of medium-sized mammals and *Peromyscus leucopus* for *Anaplasma phagocytophilum* in Connecticut. *Vector Borne Zoonotic Dis.* 2002;2:125–36. <http://dx.doi.org/10.1089/15303660260613693>
- Levin ML, Fish D. Immunity reduces reservoir host competence of *Peromyscus leucopus* for *Ehrlichia phagocytophila*. *Infect Immun.* 2000;68:1514–8. <http://dx.doi.org/10.1128/IAI.68.3.1514-1518.2000>

Address for correspondence: Felicia Keesing, Bard College Program in Biology, Box 5000, Annandale-on-Hudson, NY, 12504, USA; email: keesing@bard.edu

# EMERGING INFECTIOUS DISEASES<sup>®</sup>

[wwwnc.cdc.gov/eid](http://wwwnc.cdc.gov/eid)



To subscribe online:

[wwwnc.cdc.gov/eid/subscribe.htm](http://wwwnc.cdc.gov/eid/subscribe.htm)

Emerging Infectious Diseases is available at no charge to public health professionals

**Email:**

[eideditor@cdc.gov](mailto:eideditor@cdc.gov)

**Fax:**

404-639-1954

**Mail:**

CDC/MS D61

1600 Clifton Rd NE

Atlanta, GA 30333

USA

YES, I want to continue receiving Emerging Infectious Diseases

Number on mailing label: \_\_\_\_\_

Name (Capital letters): \_\_\_\_\_

Full mailing address (Country names in English): \_\_\_\_\_

Please write clearly